



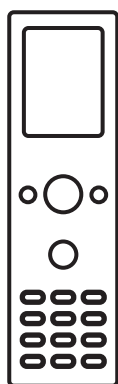
Xsight™ COLOR

QUICKSTART GUIDE

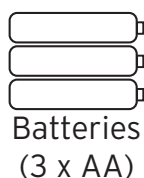
1. UNPACK

This Quickstart Guide takes you through the steps to set up your *Xsight™ Color* remote to control your home entertainment devices.

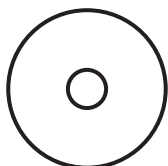
The first step is to make sure you've got the following parts in your package:



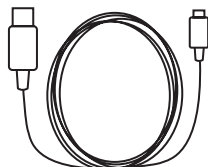
Remote



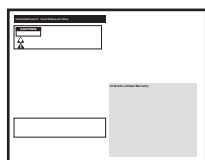
Batteries
(3 x AA)



CD-ROM



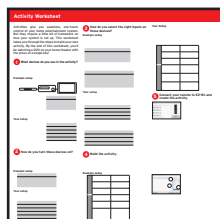
USB adapter



Important
Information
sheet



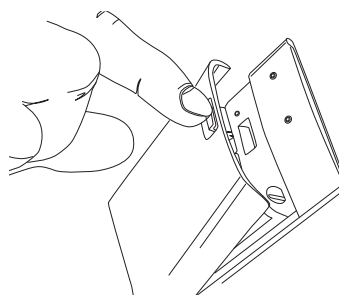
Quickstart Guide



Activity Worksheet

2. INSTALL BATTERIES

The next step is to install the *Xsight™ Color*'s batteries.



1. Remove the battery door from the back of the *Xsight™ Color*. Press up on the latch to release the door.



2. Insert the batteries (provided in this package), matching them to the (+) and (-) marks inside the battery case.
3. Replace the battery door.

When you set up the remote, you'll need to know the brands of your devices. You can save time by getting this information beforehand.

Use this chart to note the brand of each device so that you'll have it handy when the remote asks.

Note: You can also write down the model number for either the device itself or the remote control that came with the device. This information might help later on for troubleshooting (for example, if some commands don't work the way you'd expect). However, you don't need to know the model number to program the remote—just the brand.

The Activity Worksheet

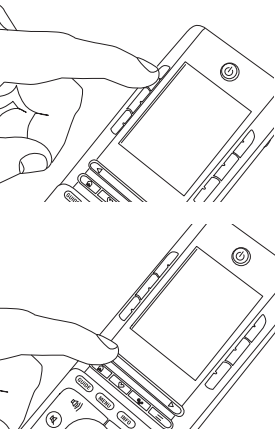
Activities give you seamless, one-touch control of your home entertainment system. But they require a little bit of homework on how your system is set up. Take a few minutes after you've filled in your brands here to fill in the separate Activity Worksheet provided...the work will pay off later!

	Brand	Model Number	Remote Number
TV			
DVD Player			
Satellite Receiver			
Cable Box			
A/V Receiver			

3. SET UP THE REMOTE

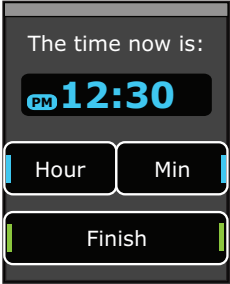
Once you've installed the remote's batteries, you're ready to start setting it up. You can wake up the screen by pressing a key.

The *Xsight™ Color* has screens that guide you through the initial setup process.



To select an item: Press the key next to the item.

To move to another page or screen: Press the left or right side of the toggle bar below the screen.

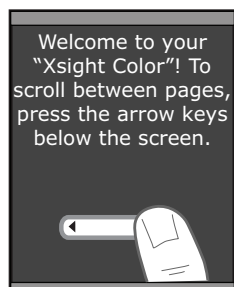


In the first part of the on-remote setup, you'll set the following:

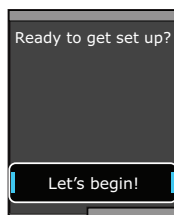
- your preferred language (probably *English*)
- where you live (*North America*)
- your clock preference (12- or 24-hour)
- the current time

To enter the time, press the *Hour* and *Min* keys. Press *Finish* when you're done.

3. SET UP THE REMOTE (CONTINUED)

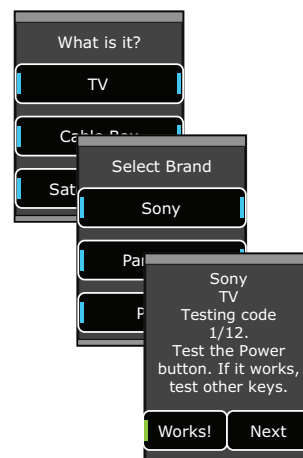
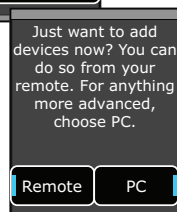


The next few screens take you through a quick tutorial to get you familiar with the remote's user interface. Use the toggle bar to go through the screens.



After the tutorial, the remote asks if you...

- are ready to get set up? (press *Let's Begin!*)
- if you want to add devices now? (press *Remote*)



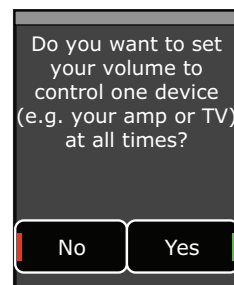
The remote takes you through the following steps to set up devices:

- select the type of device you want to control
- select that device's brand
- test each code for that brand of device to see which works the best

Note: You can also set up devices through the advanced setup on your computer.

Tips for setting up devices:

- Always point the remote directly at the device you're trying to control.
- It may take a few seconds for your device to respond to a command (especially on or off). Be patient between presses—give your device a few seconds to respond.
- Some brands of devices do not use a POWER key to turn the device on or off. Instead they use separate POWER ON and POWER OFF keys. Check your devices' original remotes to see if any of them have these separate power keys. If they do, use other keys (volume, channel, or number keys) to test codes in this step.



Once you have set up the remote to control your devices, you will be asked if you wish to set a device as the Master Volume control. This feature is useful if you always change volume using the same device, say for example an A/V Receiver.

4. CONNECT TO PC

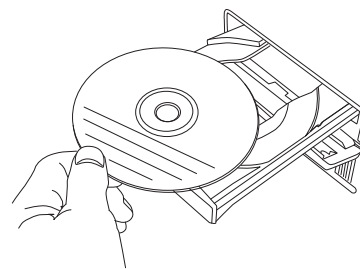
Once you've set up the remote to operate your devices, connect it to your PC to unlock its true potential! The *Xsight™ Color* uses the EZ-RC™ Remote Control Setup Wizard to configure its advanced functionality, such as Activities, Favorites, and Profiles. Before you get started, make sure your computer satisfies the following system requirements:

- USB 2.0 port
 - CD-Rom drive
 - Windows XP, SP3 (Service Pack 3) or later
 - .Net 3.5
 - Internet Explorer 6.0 or later
 - Internet connection
- or-**
Windows Vista

Note: Proxy servers, like those used in many business networks, may affect the performance of the EZ-RC™ Remote Control Setup Wizard. For best results, use the EZ-RC™ Remote Control Setup Wizard with a direct internet connection (for example, your home connection).

Note: Installing Windows XP SP3 (Service Pack 3) or .Net 3.5 may take over a half-hour, depending on the speed of your internet connection and the capabilities of your computer.

To connect to your PC:

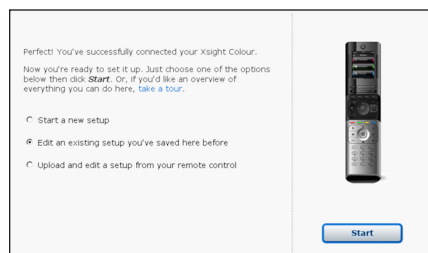
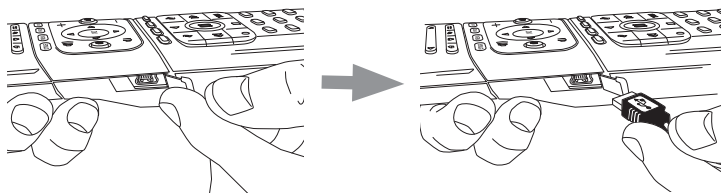


1. Insert the CD-ROM that came with your *Xsight™ Color* into your PC.

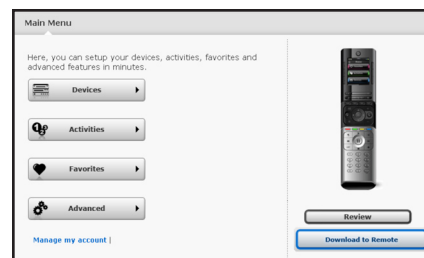
2. Follow the CD-ROM's on-screen instructions to get started.
3. Double-click on the EZ-RC™ Remote Control Setup Wizard on your computer desktop to launch the web setup.

Note: The first time you access the EZ-RC™ Remote Control Setup Wizard, you will need to register so that you can save your remote's settings.

4. Connect the remote when prompted, using the included USB Cable.



5. In the first setup screen after you've connected your remote, check the *Upload and edit a setup from your remote* option.



6. Follow the EZ-RC™ Remote Control Setup Wizard to configure your remote exactly the way you want.

If you have any questions, just click on the *Xsight™ Color* users manual on the *Xsight™ Color*'s CD-ROM or visit araccessories.com



Need help setting up this remote?
Please call our our help line toll-free at 1-800-276-0509.

Then confirm that you want to proceed. This tells the EZ-RC™ Remote Control Setup Wizard that you want to use the settings you created during the on-remote setup.

©2009 Audiovox Accessories Corporation

Xsight™ and EZ-RC™ are trademarks or registered trademarks of Universal Electronics Inc. All trademarks are the properties of their respective owners.

ARRX15G NA QSG 02